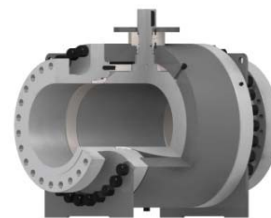


Valves

SOCVALVES
THE VALVES EXPERT

Ball valve

Floating design or trunnion, forged or cast, reduced or full bore, 2, 3 or 4 ways, single piece / 2-3 pieces / welded / top entry, with flanges / SW / BW / PE / NPT / HUB, Class 150# to API 10000, soft or metal seats, design acc. ANSI B16.34 / BS 5351 / API 6D and API 6A



Plug valve

Forged or cast design, reduced or full bore, lubricated or PTFE lining, top entry, with flanges / SW / BW / PE / NPT / HUB, Class 150# to 2500#, soft or metal seats, design acc. API 6D

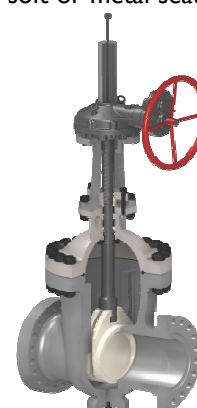
Gate valve

Forged or cast design, reduced or full bore, bolted / welded / pressure seal bonnet, solid / flexible / parallel slides wedge, with flanges / SW / BW / PE / NPT / HUB, Class 150# to API 10000, design acc. API 600, 602 or 603 and API 6A



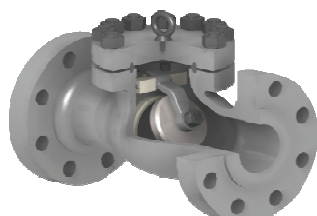
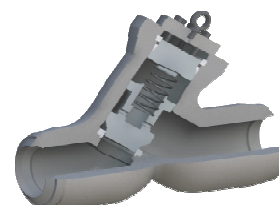
Globe valve

Forged or cast design, straight / Y / angle pattern, reduced or full bore, bolted / welded / pressure seal bonnet, conical swivel plug disc / needle type / non-return type disc, with flanges / SW / BW / PE / NPT / HUB, Class 150# to API 10000, design acc. API 600, 602 or 603 and API 6A



Piston check valve

Forged or cast design, straight / angle pattern, reduced or full bore, bolted / welded / pressure seal cap, plug disc / ball type, with flanges / SW / BW / PE / NPT / HUB, Class 150# to API 10000, design acc. API 600, 602 and API 6A



Swing check valve

Forged or cast design, straight pattern, reduced or full bore, bolted / welded / pressure seal cap, swing type, with flanges / BW / HUB, Class 150# to API 10000, design acc. API 600, 602 and API 6A

SOCVALVES - 36, impasse Moreau - 69400 VILLEFRANCHE SUR SAONE - FRANCE

Tel : +33 9 79 20 61 56 / +33 4 74 04 56 93 - Fax : +33 4 74 04 54 38

E-mail : sales@socvalves.fr - www.socvalves.fr

Valves

SOCVALVES
THE VALVES EXPERT

Single or dual plate check valve

Forged or cast design, Wafer / Lug / Double flanges, single or dual plate type, with wafer / double flanges / HUB, Class 150# to API 10000, design acc. API 594 and API 6A

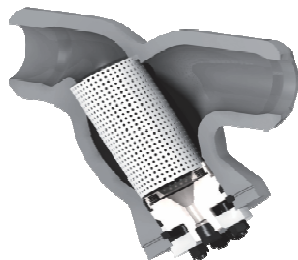


Butterfly valve

Cast design, Wafer / Lug / Double flanges, single / double or triple offset, with wafer / double flanges, Class 150# to 1500#, metal or soft seat (EPDM, Nitril, PTFE, ...), design acc. API 609

Diaphragm valve

Cast design, saddle or straight-way type, with flanges / NPT, Class 150# and 300#, EPDM or PTFE diaphragm

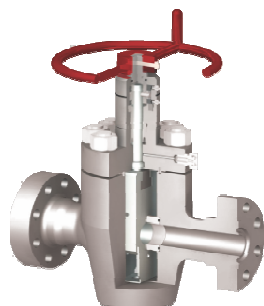


Strainer

Forged or cast design, straight or Y pattern, bolted or screwed cap, with flanges / SW / BW / PE / NPT / HUB, Class 150# to 1500#

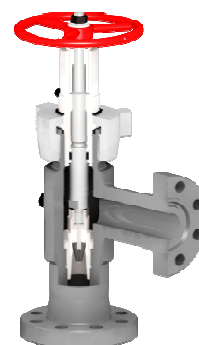
Choke valve (Wellhead equipment)

Forged or cast design, L pattern, bolted or screwed bonnet, with flanges, design acc. API 6A



Through conduit slab gate valve (Wellhead equipment)

Forged or cast design, L pattern, bolted or screwed bonnet, with flanges, design acc. API 6A



SOCVALVES - 36, impasse Moreau - 69400 VILLEFRANCHE SUR SAONE - FRANCE

Tel : +33 9 79 20 61 56 / +33 4 74 04 56 93 - Fax : +33 4 74 04 54 38

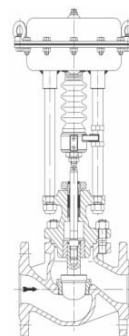
E-mail : sales@socvalves.fr - www.socvalves.fr

Valves

SOCVALVES
THE VALVES EXPERT

Control valve

Quarter turn, cage or plug disc according calculation notes made by SOCVALVES supported by the biggest manufacturers.



Actuators

- Servomoteurs électriques : Quart de tour, Linéaire, Multi-tours de 10 à 20 000 Nm
- Moteurs pneumatiques : Quart de tour, Linéaire, Simple ou Double effet, Fermeture ou Ouverture par manque d'air
- Moteurs hydrauliques : Quart de tour, Linéaire, Simple ou Double effet, Fermeture ou Ouverture par manque
- Pilotage : tous types de pilotage avec tubes/raccords en inox 316, avec schéma de fonctionnement et accessoires

Materials

- Carbon steel : A105N (A216-WCB); AISI 4130 (A487-4C); A350-LF2 (A216-WCC, A216-LCC); A350-LF3
- Alloy steel : A182-F5 (A217-C5); A182-F11 (A217-WC6); A182-F22 (A217-WC9)
- Stainless steel : A182-F304 (A351-CF8); A182-F304L (A351-CF3); A182-F316 (A351-CF8M); A182-F316L (A351-6Mo)
- 6Mo : A182-F44 (A351-CKMCuN)
- Duplex : A182-F51 (A890-4A); A182-F53 (A890-5A); A182-F55 (A890-6A)
- NAB (Nickel Aluminium Bronze) : B150-C64200 (B148-C95200)
- Monel : Alloy 400-B564-NO4400
- Inconel / Incoloy : INC.625 – B564-NO6625 (A494-CW-6MC) / INC.825 – B425-NO8825 (A494-Cu5MCuC)